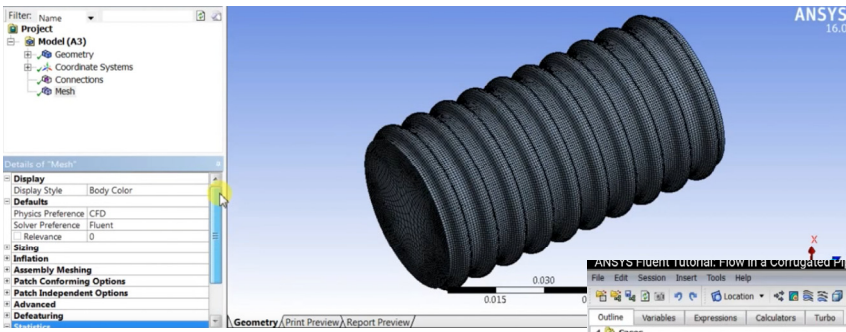


## AEROSPACE FLUID SYSTEMS ANALYSIS

### For Hose | Bellows | Tubing Assemblies

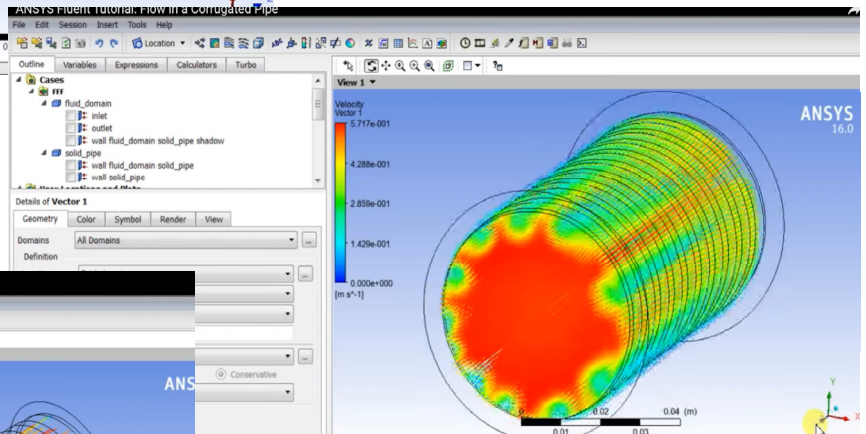
Aerospace products & services must adhere to the strictest level of standards associated within the manufacturing industry. As an unparalleled supplier to known aerospace companies, Duraflex, Inc.'s is founded on high-tech engineering & design, dependability, quality management, safety control coupled with curious innovation. The engineering, analytics, materials & manufacturing techniques used guarantee our customers receive lasting aerospace quality products that are safe & industry compliant.

Utilizing the latest ANSYS CFD / CFX Simulation & Modeling Tools, Duraflex, Inc. can:

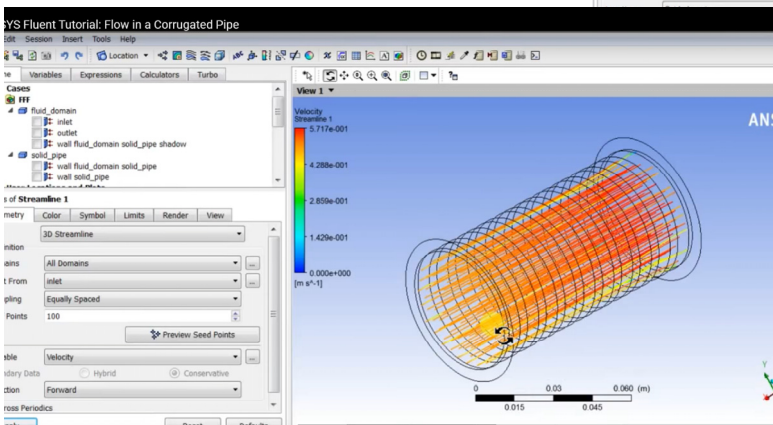


- Optimize Design
- Compare Geometries
- Speed Up Development Time  
*(Without compromising accuracy!)*
- Reduce Development Cost

- Simulate “What If” Scenarios
- Provide Insight into Performance & Efficiency
- Predict & Highlight Potential



- Simulate the Unexpected or “Upset” Conditions
- Expand Scientific Insight into an Entire System  
*(vs. Isolated Components)*
- Simplify Testing



CONTACT US: 877.462.1007 | [www.duraflexinc.com](http://www.duraflexinc.com) | [info@duraflexinc.com](mailto:info@duraflexinc.com)

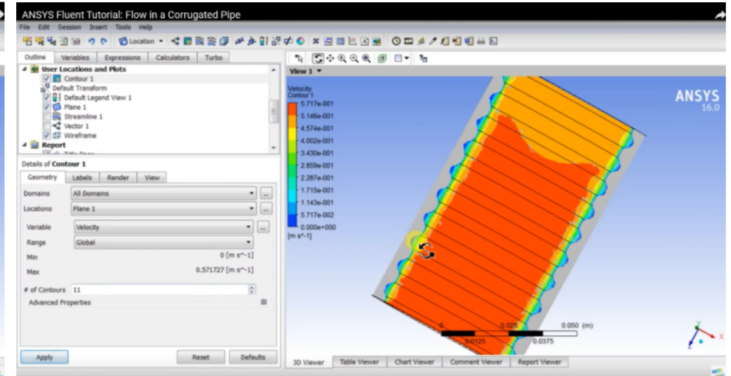
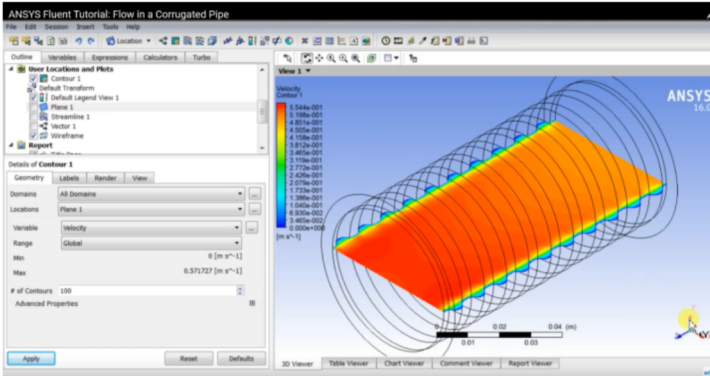


- Short Lead Times (or) In-stock
- High Level AE Industry Certification
- Custom Orders Available
- Cost Competitive...always!
- No Minimums
- Professional Appearance
- High Tech Testing | Analytics
- Engineered Drawings
- American Made
- American Materials



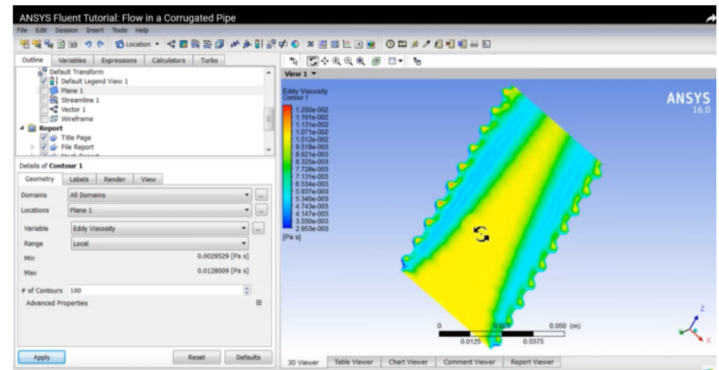
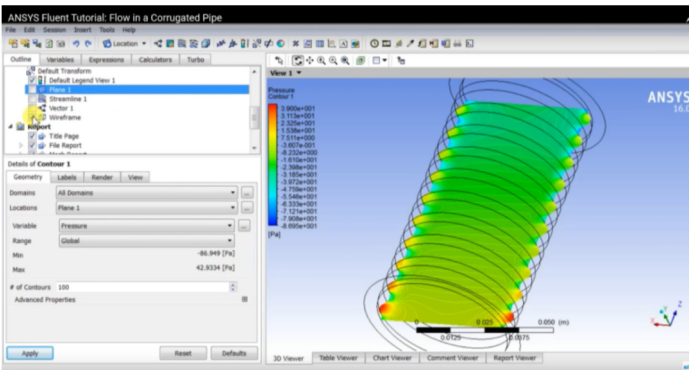
# AEROSPACE FLUID SYSTEMS ANALYSIS

## For Hose | Bellows | Tubing Assemblies



### Capabilities

- Use quantitative analysis to allow for predictions & modeling of fluid structural interactions.
- Analyze effects of geometry to predict flow, pressure drop, turbulence & heat transfer.
- Determine high stress areas of concern.
- Reveal effects of pressure & force on components & assemblies.
- Evaluate effects of utilizing various materials & finishes.
- Isolate & reduce amount of physical testing required by “kicking out” troublesome or inefficient designs.



Trust **Duraflex, Inc.** to lead your design project by taking on the more complicated modeling associated with convoluted bellows, hose & tubing projects.

CONTACT US: 877.462.1007 | [www.duraflexinc.com](http://www.duraflexinc.com) | [info@duraflexinc.com](mailto:info@duraflexinc.com)



- Short Lead Times (or) In-stock
- High Level AE Industry Certification
- Custom Orders Available
- Cost Competitive...always!
- No Minimums
- Professional Appearance
- High Tech Testing | Analytics
- Engineered Drawings
- American Made
- American Materials

